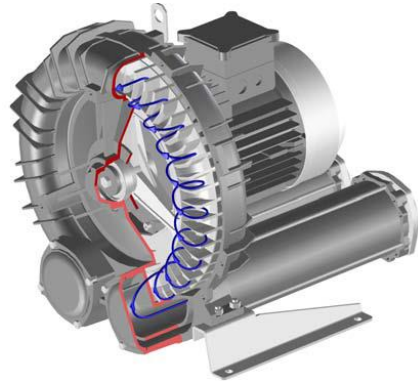


# THEREC CORPORATION LTD.

The High Pressure Blower Company



Atex Certified Blowers



ATEX EXPLOSIVE ATMOSPHERES



[www.thereccorp.com](http://www.thereccorp.com)



**MS Series /Single impeller ,Single stage**  
Flow rate Up to 1,234 m<sup>3</sup>/hr  
Pressure up to +500 mBar  
Vacuum down to -375 mBar  
Material in Aluminium casting  
ATEX explosion proof version is available



**MD Series /Single impeller ,Double stage**  
Flow rate Up to 473 m<sup>3</sup>/hr  
Pressure up to +750 mBar  
Vacuum down to -500 mBar  
Material in Aluminium casting  
ATEX explosion proof version is available



**TS Series /Twin impeller ,Single stage**  
Flow rate Up to 1,985 m<sup>3</sup>/hr  
Pressure up to +450 mBar  
Vacuum down to -350 mBar  
Material in Aluminium casting  
ATEX explosion proof version is available



**TD Series /Twin impeller ,Double stage**  
Flow rate Up to 1,007 m<sup>3</sup>/hr  
Pressure up to +650 mBar  
Vacuum down to -500 mBar  
Material in Aluminium casting  
ATEX explosion proof version is available

ATEX  
BLOWERS





THE ORIGINAL ROOTS BLOWER FROM USA



**URAI Series / Bi lobe impeller**  
Flow rate Up to 4,026 m<sup>3</sup>/hr  
Pressure up to +1,034 mBar  
Vacuum down to -539 mBar  
Material in Cast iron  
GAS & Explosion proof version is available



**RAM Series / Bi lobe impeller**  
Flow rate Up to 6,030 m<sup>3</sup>/hr  
Pressure up to +1,240 mBar  
Vacuum down to -539 mBar  
Material in Cast iron  
GAS & Explosion proof version is available



**RAM-VJ Series / Bi lobe impeller**  
Water jet Vacuum pump  
Flow rate Up to 4,250 m<sup>3</sup>/hr  
Vacuum down to -813 mBar  
Material in Cast iron



**RBTM Series / Bi lobe impeller**  
Bulk Truck Blower  
Flow rate Up to 4,250 m<sup>3</sup>/hr  
Pressure up to +1,241 mBar  
Material in Cast iron



**Tri-RAM Series / Tri lobe impeller**  
Flow rate Up to 82,850 m<sup>3</sup>/hr  
Pressure up to +1,000 mBar  
Material in Cast iron



**RAS ,RGS Series / Bi lobe impeller**  
Flow rate Up to 73,440 m<sup>3</sup>/hr  
Pressure up to +2,413 mBar  
Vacuum down to -539 mBar  
Material in Cast iron  
GAS & Explosion proof version is available

## Multi Stage Air & Gas Centrifugal Blower



Flow rate Up to 4,500 m<sup>3</sup>/hr  
Pressure up to 10,000 mmAq (1.0 bar)  
Material in cast aluminium  
Stainless steel shaft is available on option  
Explosion proof, ATEX version. is available  
Special seal for gas tight version  
Internal special coating for corrosive gas & Biogas



## Industrial Type Centrifugal Blower



Flow rate Up to 400,000 m<sup>3</sup>/hr  
Pressure up to 2,800 mmAq  
Material in Carbon & Stainless steel  
Stainless steel shaft is available on option  
Explosion proof version. is available  
Internal special coating for corrosive gas & Biogas

## Industrial Type Axial flow fan



**SAVIO** S.r.l. 

Flow rate Up to 150,000 m<sup>3</sup>/hr  
Pressure up to 165 mmAq  
Material in Carbon & Stainless steel  
High temperature version is available  
Extraction towers for roofs



In-line fans with removable bodies and small size for high temperatures (250°C) designed to work interleaved in chimney ducts  
Flow rate Up to 2,900 m<sup>3</sup>/hr  
High temperature option, up to 250 degree C



Fan designed with the most advanced technology & experience to withstand extreme working condition in oven, drier and other application with high temperature and humidity  
Flow rate Up to 68,000 m<sup>3</sup>/hr  
High temperature option, up to 150 degree C



Centrifugal single-inlet, medium & high-pressure fans with casing and impeller made from cast aluminium  
Flow rate Up to 2,300 m<sup>3</sup>/hr  
Pressure up to 945 mmAq  
High temperature option, up to 250 degree C



Centrifugal single-inlet, medium-pressure fans with casing and straight-blade impeller made from cast aluminium to transport dust and solids  
Flow rate Up to 3,115 m<sup>3</sup>/hr  
Pressure up to 945 mmAq  
High temperature option, up to 250 degree C

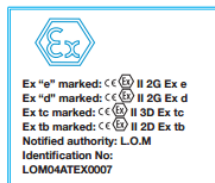


Plastic anticorrosive centrifugal fans with and without ATEX certification  
Flow rate Up to 4,500 m<sup>3</sup>/hr  
High temperature option, up to 400 degree C



Smoke extract roof fans 400°C/2h centrifugal roof fans with horizontal or vertical outlet air  
Flow rate Up 10,429 m<sup>3</sup>/hr  
High temperature option, up to 400 degree C

**Explosive atmospheres ATEX fans**  
**High efficiency "Efficient Work" fans**

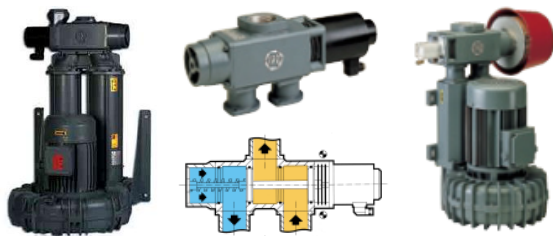




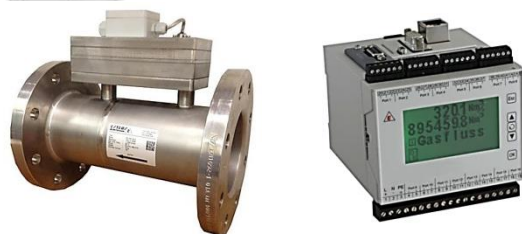
## Blower Accessories and Related Equipment



Pressure and Vacuum relief valve  
Size 1.0, 2.0, 3.0 & 4.0 inches  
Flow rate Up to 2,000 m<sup>3</sup>/hr  
Pressure up to 600 mBar  
Vacuum down to 450 mBar



Flow Reversing Valve ,Size 2.0 & 3.0 inches  
Pneumatic and Electrical control, 24 VDC  
and 220 VAC



Bio gas Flow Meter size, 1.0" to 16.0" with  
Flow computer controller & System  
Flow measuring from 0.2 to 16,000 m<sup>3</sup>/hr



Air and Gas diffuser for waste water  
treatment aeration system  
Material in Polyurethane and EPDM

simply flexible  
**NORRES**

**PRO<sub>2</sub>AIR<sup>®</sup> Pre-PUR 602**



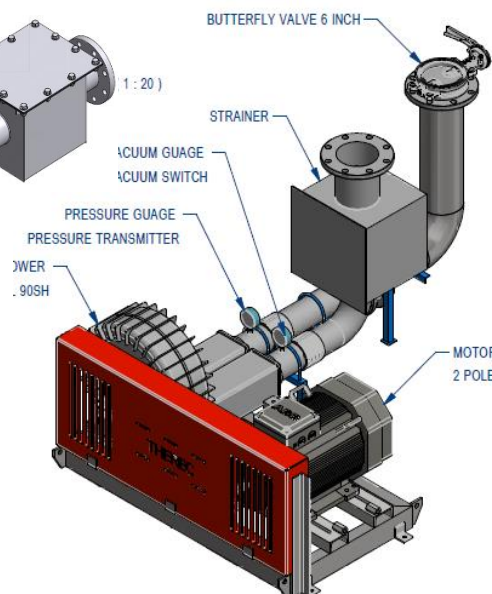
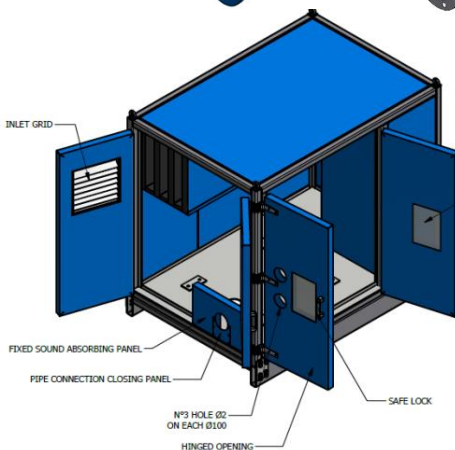
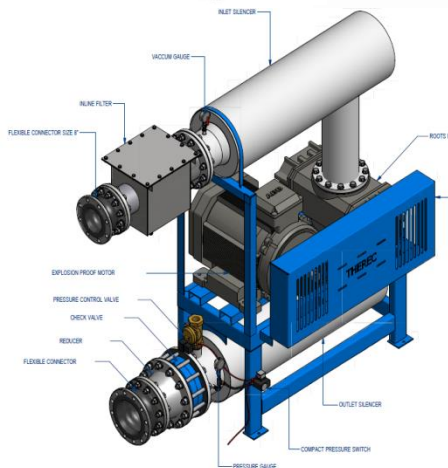
**FPZ**  
BLOWER TECHNOLOGY

**ESTERS**  
ELEKTRONIK **E**

## Our own manufacturing Equipment



Acoustic enclosure and Silencer for high  
pressure blower noise control  
Noised Reduction level from 5 dBA to 20 dBA  
Material in Carbon and Stainless Steel



[www.thereccorp.com](http://www.thereccorp.com)





# Engineering design package set



Roots Blower Package for waste water treatment aeration system /  
Thai Union Frozen Product (Public) Co.,Ltd.



Roots Blower Package with filter and header / in SUS 304 / for waste water treatment plant  
Biogas boosting set for Electrical power generator  
Ubol Ethanol Bio Power Co.,Ltd.



Roots Blower Package for pneumatic conveying system  
The Siam Cement (public) Co.,Ltd.



Ring Blower Package for pneumatic conveying system  
United Food Co.,Ltd.



Multi stage centrifugal Blower  
Biogas boosting set for Electrical power generator  
Ekarat Bio Power Co.,Ltd.

## On site Installation Service & Commissioning



**Therec Corporation Ltd.**

Tel ☎ (662) 893 9003-4 Fax : (662) 893 9005

88 Soi Karnjanapisek 4/2 Karnjanapisek Rd. Bangbon Bangkok  
10150 Thailand

[www.thereccorp.com](http://www.thereccorp.com)

Food grade product TRC 001 2018